



# The Forum Insider

Newsletter of the Genealogical Forum of Oregon

Volume 31, Number 5

January 2020

## Please Preserve Heritage for the Future

*Vince Patton, President*



Through your generosity in supporting the mission of the GFO, you share our values of preserving and sharing heritage for future generations.

Your support is essential to all the resources, records, and education that the Genealogical Forum of Oregon provides.

We're 100% volunteer. No paid staff. No paid fundraisers.

But we're facing rising costs, some of them unexpected. A month ago, our website service unexpectedly jumped 22% to \$1968 per year. Database subscriptions rose 10% to \$5370 per year.

Member dues cover just 25% of our budget. So, once a year—and only once—we ask for your additional support.

Please make your tax-deductible donation now at [gfo.org/appeal](http://gfo.org/appeal).

- Your \$75 donation could pay for two months of our website cost increase.
- Your \$100 donation would offset one month's rent increase.
- Your \$448 donation would cover one month of database subscriptions.

Every single contribution goes directly into providing resources and education.

Everyone is welcome at the GFO. We offer abundant opportunities to everyone who visits the library, searches our website, or preserves their family history with us.

The Genealogical Forum of Oregon would not be here if those before us had not valued preserving our heritage.

Please honor their dedication and leave a legacy of your own. [Give now!](#)

## Don't Miss GFO's Open House!

*LauraDenise White, Insider Editor*

GFO's annual Open House will run from March 13 through March 22, 2020. That's ten full days packed with FREE genealogical classes and access to GFO's library, databases, and digitized resources.

This year's class schedule is filling up and can be viewed at [gfo.org/open-house](http://gfo.org/open-house).



Highlights include:

- Mexican Genealogy—Guest Speaker John Schmal
- DNA Day
- Software Day
- Irish Day
- Oregon Donation Land Claims
- Online Black Historical Newspapers

We look forward to having you join us! GFO's Open House is also a wonderful opportunity to meet new friends and make new discoveries in your research.



## The Forum Insider

Newsletter of the Genealogical Forum of Oregon

[gfo.org](http://gfo.org) | [info@gfo.org](mailto:info@gfo.org)

2505 SE 11th Ave., Suite B18  
Portland, OR 97202-1061  
503-963-1932

### Library Hours

Mon, Tues, & Thurs..... 9:30 a.m.–5 p.m.  
Wednesday..... 9:30 a.m.–8 p.m.  
Friday & Saturday ..... 9:30 a.m.–3 p.m.  
Sunday ..... 12 noon–5 p.m.

### Contents

Annual Appeal .....	1
GFO's 2020 Open House .....	1
Digitization Effort .....	2-3
Lessons Learned .....	3
Shelf Place Markers .....	4
Aurora Colony .....	4
Giving Tuesday Success .....	5
Boot Camp .....	Flyer
Inclement Weather Closures .....	6
Benevity .....	6
GFO Stars .....	6
OHS Renovations .....	Flyer
Treasurer's Report .....	7
Special Interest Groups .....	7
GFO's 2020 Spring Seminar .....	Flyer
Calendar .....	Back cover

Submissions to *The Forum Insider*: Please send comments, corrections, news, short success stories, and announcements to LauraDenise White and Ruth Summers, editors, at [insider@gfo.org](mailto:insider@gfo.org), or leave messages at the GFO desk, 503-963-1932. Please provide submissions two months ahead of time for inclusion in the next publication's issue.

## Library Team Launches Digitization Effort

*Laurel Smith, Library Committee Chair*

The Genealogical Forum of Oregon strives to provide the best in resources for our members. One of the really stellar things in our library is the periodicals collection; however, it is a collection that we rarely see used.

We understand. It's so easy to jump on the computer to find indexes and documents these days that many researchers never make it past the research area to the books, let alone go poring over a stack of unindexed genealogical journals, page by page by page.

We've said it before, and it bears repeating: Most genealogical content is not on the internet.

So, the GFO Library Committee has launched a new project to help you get more out of the outstanding periodicals collection at GFO. We're digitizing!



Image Source: Jørgen Stamp [CC BY 2.5 dk (<https://creativecommons.org/licenses/by/2.5/dk/deed.en>)]

What this means for you: Instead of slogging through paper copies at the GFO, you'll be able to access digitized files when you visit the library. Instead of going issue by issue, you'll be able to open one digital file for (up to) a 10-year span and do keyword searches.

What this means for the GFO: We're able to preserve the periodicals we have from further deterioration and protect them from disappearing from the library. Additionally, we're clearing some much-needed shelf space, because we are putting the paper copies into storage.

The process is not as speedy as we'd like—and the Library Committee would welcome more volunteers to help—but the effort is well underway.

One of the first titles we digitized was the *Redwood Researcher*. On our shelves was a 50-year run of journals, four issues per year. This meant our patrons needed to manually look through 200 issues to find information.

*[continued on page 3]*



[Library Team Launches Digitization, continued...]

These have been turned into five searchable digital files and 24 inches of library shelf space.



In addition to the periodicals, there will be more digital content coming to our GFO researchers. Some of the content will be available from home and lots more will be available when you

visit the GFO. Stay tuned and be sure to read the in-depth article in the March issue of *The Bulletin*.

How can you help? Volunteers are needed at the library to . . .

- Remove bindings, staples, tape, etc.
- Prepare items for scanning (review and identify missing material)
- Scan on high-speed scanner
- Perform processing in Adobe Acrobat Pro on GFO computers (training provided)

We are also seeking individuals who have Adobe Acrobat Pro to do processing at home.

Want to help? Please email [library@gfo.org](mailto:library@gfo.org), and we'll get you started.

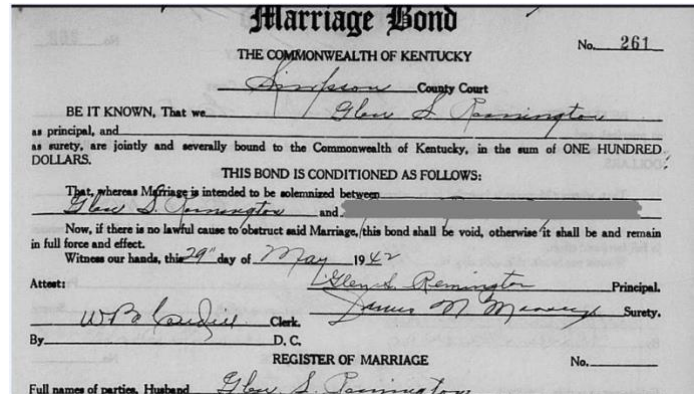
## Lesson Learned

*Nanci Remington*

In early November, Mike Fernandez sent an email to the members of the German Interest Group noting that there would be free access to the FindMyPast website over the Veterans Day holiday weekend. I thought of the site as a resource for records from the United Kingdom, Ireland, and Canada. Still, I knew they had a growing collection of United States records, and I had occasionally used the site to access the Periodical Source Index (PERSI) but had not done extensive research on it.

Since access was free and available at home, and because it was Veterans Day, I randomly plugged in my dad's name. Surprise! The first result was a marriage record from Kentucky in March 1942. I knew my father had a brief marriage before he married my mother. I had a name and an approximate date. But this record also provided me with an image of the marriage bond and

registration of marriage. The new information included the name of the woman he married (my earlier information had an incorrect spelling for her surname), her parents, my dad's residence at the time (Nashville, Davidson County, Tennessee), and his employer (Vultee, which is an aircraft manufacturer).



My dad spent most of his life working for aircraft companies, but I did not know about this job or that he had lived in Nashville. He returned to California shortly afterwards. He is listed as married when he enlisted in the Army Air Force in November of 1942. The family story is that Dad brought home "an Italian girl" and that the marriage was annulled. His wife was not Italian. I have no idea if there was a divorce or annulment. But he was single on later military records. He married my mother in 1952. And although the information was not entirely new, it does fill in a piece of my father's story.

The description for the United States Marriages record set on FindMyPast says that the images were from FamilySearch. However, I could not find the marriage on that site or on Ancestry, even though I now had an exact location, date, and spelling of the name.

I have learned not to ignore a website just because I *think* I know what records it may contain. Next time I am at GFO Library, I will definitely spend more time on FindMyPast.



*Vultee Aircraft Company, Nashville, 1941.  
By Jack Delano. Library of Congress.*

If you would like to see what records are on the site, you can do some preliminary searches without a subscription at [search.findmypast.com/historical-records](https://search.findmypast.com/historical-records). Good luck with your research.





## Shelf Place Markers at GFO

GFO's Library Committee recently created shelf markers for your convenience. When removing a book from our stacks, simply use one of the shelf markers to keep the book's place on the shelf.

President Vince Patton saw something similar at a library in California, and Mac McGarvin has taken on the job of creating shelf markers for us.

The shelf markers will be hanging on hooks in the aisles as shown to the right.

That process again: take a book off the shelf and insert a shelf marker, then, when you've had your fill of the book, reshelv the book, pull the marker, and return it to the hook.

Thank you for keeping GFO's library organized, neat, and tidy for the benefit of your fellow researchers.



of devoted followers. In 1844, Keil sent scouts to find a location for a Christian community devoted to the Golden Rule. Later that year he established the colony of Bethel in Shelby County, Missouri.

After ten years in Missouri, Keil saw encroaching civilization as a threat to his colony, so he once again sent out scouts to find a suitable location for a new colony, this time in the Pacific Northwest. The group selected a site on the Willapa River in Washington Territory, and Keil led a group of eighty individuals there in 1855. The lead wagon was the hearse for Keil's oldest son, Willie, who had died shortly before the trip began.

After arriving at Willapa, Keil rejected the site as it was too remote and isolated for commercial opportunities. He and most of those who came from Missouri moved to Portland, where he learned there was land available twenty-five miles to the south in the Willamette Valley. In 1856, he established a new colony there named for his daughter Aurora.

For twenty-one years, Keil led the community as it built a hotel, church, and other buildings and became successful in developing crops and orchards. The community held true to its basic Christian beliefs, but Keil's isolationist view transformed into an understanding of the economic role the community could play in providing goods and products to the Willamette Valley's growing population.

Among those products was the excellent food served at the Aurora Hotel and the music of the Aurora bands. Keil was instrumental in bringing the railroad to Aurora in the early 1870s as a way to connect Aurora with other cities.

Keil remained the leader of Aurora, and nominally of Bethel, until his death in December 1877. Soon after his death, efforts began to disband the two colonies, with the final dissolution taking place in 1883. (Reference note: *The Oregon Encyclopedia*.)

### Today at the Aurora Colony Historical Society

Old Aurora Colony Museum exhibits focus on Colony families, crafts and history. Tours are offered of the buildings that house the collections of artifacts that have been passed down over the generations.

Throughout the year there are several special events that feature quilts, craft demonstrations and hands-on activities for adults and children. Please find all the visitor information at the museum's website here: <http://www.auroracolony.org/>.

---

## Aurora Colony: A Christian Communal Society

*Reprinted with permission from the Willamette Valley Genealogical Society Newsletter*

Nearly 600 people, almost all German and Swiss emigrants, established and lived in the Aurora Colony, a Christian communal society, from 1856 to 1883. Christian communal living in the Aurora Colony was carried out by individuals who were members of specific family groups, and this was notably unlike other Christian colonies that practiced celibacy.

Known by his followers as Father Keil and as Dr. Keil and King Keil to others, Wilhelm Keil was the leader of one of the most successful nineteenth-century utopian community experiments west of the Rocky Mountains. He was born in Bleicherode, Prussia in 1812. In 1836, he married Louisa Reiter, and the couple embarked for America soon after.

Keil went through a series of religious transformations but ultimately denounced all organized religion and sought to establish his own belief system among a group



## GivingTuesday at GFO was a Great Success!

What do you get when you put together 48 energetic volunteers, four dozen donuts, a dozen bagels, 40 cups of coffee, nine large pizzas, and some delicious goodies? On December 3rd at GFO, this all added up to equal **218.5 hours** of GivingTuesday volunteering filled with laughter, discovery, and library organization.

That's what GivingTuesday was all about at GFO. Because of the volunteers who gave of their time and energy, books in our library are now much better organized and should be easier for everyone to find.

Some of the participants stated that they had not realized the depth of GFO's library collection. Many of the volunteers said they are excited to begin digging into the various family history resources they saw during GivingTuesday.

**Thank you to everyone who came to help! Efforts like these are essential to keeping the thousands of books organized. Watch for a similar event in late summer.**

During the course of GivingTuesday's work, volunteers located many missing books, but they also identified additional missing items.

If you have time to give in the coming months, GFO would love to have your help finding these items, getting labels on the unlabeled periodicals, and more. There are lots of different jobs and training available. Please send us a message at [library@gfo.org](mailto:library@gfo.org) if you'd like to know more about how you can help to make our library even better than it is now.





# GENEALOGICAL FORUM OF OREGON

2505 SE 11th Ave., Suite B-18  
Portland, Oregon 97202  
503-963-1932 • [GFO.org/bootcamp](http://GFO.org/bootcamp)

**9**  
**JAN**  
Thursday

MEMBERS FREE  
NON-MEMBERS \$20

**9 A.M. - 5 P.M.**

## GENEALOGY BOOT CAMP

Join Laurel Smith at the GFO for a day of beginning genealogy. There will be sessions about the census, vital records, immigration and naturalization, discussions about genealogy software and database use, organizing your research and more – all geared toward beginners. Bring a sack lunch so the discussion can continue while we eat. GFO members may attend for free, non-members for \$20.

**Register online at [GFO.org/bootcamp](http://GFO.org/bootcamp) by Jan. 6.** A link to the class notes and a short, pre-Boot Camp assignment will be emailed on Jan. 7.

**Walk-ins unavailable, so please register online.**

JOIN US!

boot camp: 'bōōt , kəmp/ *noun*: A training camp for new recruits, with strict discipline.

"...a marathon that was time well-spent."

"...more than exceeded my expectations."

"Boot Camp was rocking, wow do I regret not having it before I started..."





## If it Snows, We May Close

In instances of inclement weather this winter, GFO may reduce hours or close for the safety of our volunteers and patrons.



To view GFO's possible inclement weather closures, please check your local media website's winter closure lists. If we are closing our library due to weather conditions, we

notify Flash Alert Newswire, who puts us on closure lists for local media outlets.

Please also be sure to check both the homepage on GFO's website ([gfo.org](http://gfo.org)) and GFO's Facebook page ([www.facebook.com/gfo.org](http://www.facebook.com/gfo.org)) for closures and hour reduction updates.

If in doubt, always be sure to give our office a call at 503-963-1932. If no one answers, please don't come in.

Generally, GFO follows the Portland Public Schools' closure schedule for inclement weather. Be safe out there!

## Intel Workers & Retirees

### You Can Double-Support GFO

If you work at Intel—or at any company that offers matching funds to charitable organizations—you have the chance to double your donations to the GFO! [Benevity.org](http://Benevity.org) can help.

If you're unsure if your company provides matching funds to the GFO, inquire with your human resources (HR) department.

For Intel, the following people are eligible to request matching donations:

- Active US blue badge employees
- Spouses of Active US blue badge employees
- US Intel Retirees

What qualifies to be matched:

- General monetary donations to the GFO
- Membership dues

- Volunteer hours (Intel matches your hours at \$10/hour)

\*Tip: If you would like to reduce the amount of fees taken out of your matching donation, you can make a payment directly to the GFO and then submit a match request through Intel's Benevity Portal. If you make a payment via PayPal or credit card through the Benevity Portal at <https://causes.benevity.org>, they will take out management fees of up to 3 percent.

## GFO's November Star

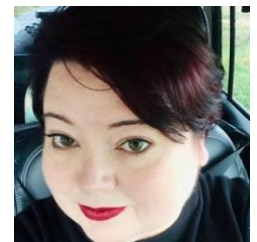
### Kelly Thornburg



Our GFO Star for November is Kelly Thornburg. When GFO needed volunteers for its annual financial review, Kelly offered to help. She has decades of accounting experience and happens to be the mother of our incoming treasurer Erin Randall. While not a GFO member, we welcomed a set of "outside expert" eyes. She lives in Pendleton and drove over three hours (twice!) to help pore over long columns of numbers and match up receipts in working sessions of the Financial Review Committee. A million thanks, Kelly!

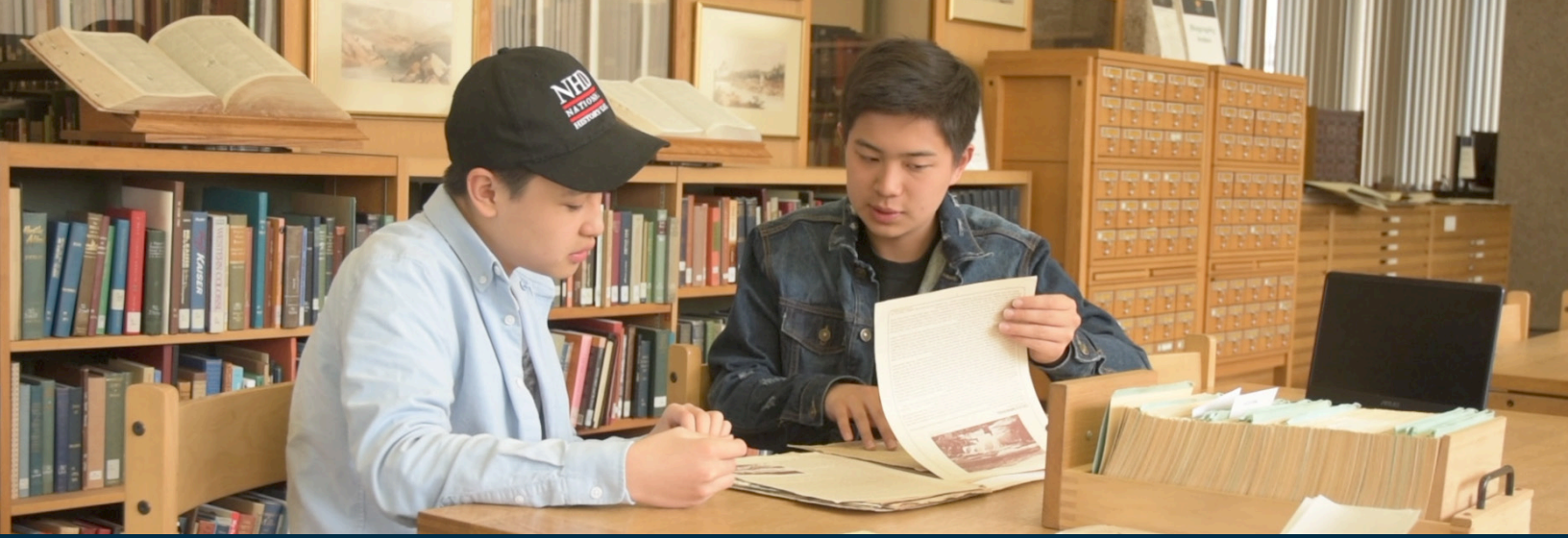
## GFO's December Star

### Kendra Blumberg



GFO's board voted Kendra Blumberg to be our December Star. Kendra is an organizational marvel who stepped in earlier this year to help us seek donations for our raffle from genealogy companies. She landed the largest set of donations we've been able to offer! This fall she helped again by scheduling speakers for the next Open House. In a whirl of efficiency, she filled most of the schedule in just two weeks.

She's a certified Microsoft application user and will soon teach some classes on spreadsheets for genealogy. Thank you, Kendra!



# OHS Research Library Renovation

## Quick Facts for Visitors

Preparations are underway to transform the OHS Research Library into a more welcoming and accessible space for research, learning, and collaboration. Thanks to individual and foundation support through our **FORWARD!** campaign, this critical renovation will allow staff to better serve the thousands of researchers, educators, and students who access our collections and scholarly resources in person and online each year.

OHS has already begun moving collections offsite in preparation for the 2020 renovation. While the downtown library will close to the public beginning **December 29, 2019**, our goal is to continue to provide services to the fullest extent possible through the estimated ten-month closure. Beginning in early spring 2020, in-person research will be available on weekdays at an alternate location **by appointment**, and library staff will continue to answer reference requests by phone and email. Service will be limited during the final move-out (January–February 2020) and move-in phases (precise dates to be announced).

Of course, you will continue to have access to information about Oregon history and library collections through our online resources: the [Oregon Encyclopedia](#), the [Oregon History Project](#), the [Oregon History Wayfinder](#), [OHS Digital Collections](#), and the [Library Online Catalog](#). We appreciate your patience during this period, and we look forward to unveiling our new library space by the end of 2020!

### KEY DATES:

Library closed for initial collections move:  
**November 4–13, 2019**

Last day to request materials from our offsite storage:  
**December 14, 2019**

Final day the library will be open downtown:  
**December 28, 2019**

Estimated start date of research by appointment at remote location: **March 2020**

Estimated reopening of downtown research library:  
**Late 2020**

For updates on the renovation, visit [ohs.org/libraryreno](https://ohs.org/libraryreno)

Contact [libreference@ohs.org](mailto:libreference@ohs.org) if you have any questions or would like to make a remote reference request.



THE OREGON  
HISTORICAL  
SOCIETY  
FOUNDED 1898





### Treasurer's Reports

By Erin Randall

<b>October 2019 Income</b>	<b>\$11,832.52</b>
Contributions & Investments	\$5,169.77
Memberships	\$3,976.00
Seminars & Other Programs	\$1,814.00
Library & Research	\$239.75
Book Sales & Publications	\$633.00
<b>October 2019 Expenses</b>	<b>\$6,532.90</b>
Administration	\$474.21
Education Programs	\$664.35
Facilities & Equipment	\$4,915.76
Library & Research	\$478.58
<b>Net Income for the month</b>	<b>\$5,299.62</b>
<b>Year-to-Date Net Income</b>	<b>\$3,864.46</b>



### Special Interest Groups

<http://gfo.org/learn/special-interest-groups/>

#### African American

3rd Saturdays, 12–2 p.m.  
Led by Janice Sellers.

[African\\_American@gfo.org](mailto:African_American@gfo.org)

#### British Group

4th Saturdays in Jan., Mar., May, Sept.,  
1–3 p.m.

Led by Duane Funk.

[UK@gfo.org](mailto:UK@gfo.org)

#### DNA – Beginners

4th Saturday in Feb., May, Aug., &  
Nov., 9 a.m.–12 p.m.

Led by Emily Aulicino.

[DNA@gfo.org](mailto:DNA@gfo.org)

#### DNA – Advanced

4th Saturday in Jan., Apr., July, and  
Oct.,

9 a.m.–12 p.m.

Led by Emily Aulicino.

[DNA@gfo.org](mailto:DNA@gfo.org)

#### DNA – Q & A

1st and 3rd Wednesdays, Sept.–June,  
1–3 p.m.

Led by Lisa McCullough.

[DNA\\_QA@gfo.org](mailto:DNA_QA@gfo.org)

#### Family Tree Maker Beginners

3rd Sundays, 1–3 p.m. Jan., Apr., Jul.,  
Oct.

Led by Laurel Smith.

[FTM@gfo.org](mailto:FTM@gfo.org)

#### Family Tree Maker Users' Group

3rd Sundays, 1–3 p.m., Feb., Mar.,  
May, June, Aug., Sept., Nov., Dec.

Led by Joyce Grant-Worley.

[FTM@gfo.org](mailto:FTM@gfo.org)

#### French Canada Group

3rd Sundays, 3:30–5 p.m.

(no July or August meetings)

Led by Bob LaMarche.

[FrCan@gfo.org](mailto:FrCan@gfo.org)

#### Genealogy Problem Solvers

3rd Saturdays (except July),  
9:30–11:30 a.m.

Led by Katie Daly.

[GPS@gfo.org](mailto:GPS@gfo.org)

#### German Group

1st Saturdays, 1–3 p.m.

Led by Mike Fernandez and Tia Cobb.

[German@gfo.org](mailto:German@gfo.org)

#### Italian Group

1st Tuesdays, 10 a.m.–12 p.m.

Led by Stephanie Silenti

[Italian@gfo.org](mailto:Italian@gfo.org)

#### Great Lakes Region

2nd Saturdays monthly (except Jul.,  
Aug., Dec.), 9:30–11:30 a.m.

Led by Lynn Rossing.

[GreatLakes@gfo.org](mailto:GreatLakes@gfo.org)

#### Irish Group

3rd Wednesdays Feb., Apr., June, Aug.,  
& Oct., 6–8 p.m.

Led by Karen Hubbard. [Irish@gfo.org](mailto:Irish@gfo.org)

#### Learn & Chat

1st & 3rd Weds, 10 a.m.–12 p.m.  
Led by Sandy Alto & Jeanne Quan.

[LearnandChat@gfo.org](mailto:LearnandChat@gfo.org)

#### Mexican Ancestry

2nd Fridays, Feb., Apr., June, and Oct.  
11:30 a.m.– 1:30 p.m.

Led by Vincent Ramirez.

[SW@gfo.org](mailto:SW@gfo.org)

#### Virginia Group

1st Saturdays, Sept.–June, 10 a.m.–12  
p.m.

Led by Judi Scott and Carol Surrency.

[Virginia@gfo.org](mailto:Virginia@gfo.org)

#### Writers' Forum

2nd Saturdays, Sept.–May, 1–3 p.m.

Led by Peggy Baldwin.

[Writers@gfo.org](mailto:Writers@gfo.org)



# Solve Puzzles with DNA

featuring nationally-respected genetic genealogy educator



## KAREN STANBARY

APRIL

4 & 5

Image: Dreamstime.com 22510350 Rolffimages

## Genealogical Forum of Oregon **Spring Seminar**

### Saturday, April 4

10 a.m. - 4:30 p.m.

Center for Self Enhancement (SEI)

### SOLVE PUZZLES WITH DNA EVIDENCE

Learn how to manage and interpret DNA evidence, then incorporate into your existing documentary research. Receive tips from a retired Licensed Clinical Social Worker on managing conversations about unexpected DNA results.

### Sunday, April 5

9:30 a.m. - noon

Genealogical Forum of Oregon

### SOLVING ADVANCED PUZZLES WITH DNA

More complex puzzles require more complex DNA evidence analysis. Deepen and expand your skills.

**Karen Stanbary, CG®, MA, LCSW**, is an author and national lecturer focusing on topics related to using genetic and documentary evidence to solve genealogical brick walls.

Karen is a coordinator and faculty member at three national week-long institutes: GRIP (Chromosome Mapping), IGHR (Intermediate DNA), and SLIG (Meeting Standards Using DNA Evidence). She also received the NGSQ Award for Excellence for her complex evidence case study incorporating traditional research and DNA analysis in the June 2016 issue of the National Genealogical Society Quarterly.

Karen holds the credential Certified Genealogist from the Board for Certification of Genealogists where she serves as a Trustee and is chair of the standing DNA Committee.

Register Online  
[gfo.org/dna](http://gfo.org/dna)

2505 SE 11th Ave. #B18, Portland, OR | 503-963-1932

## SATURDAY SEMINAR DETAILS

### Location

Center for Self Enhancement (SEI)  
3920 N. Kerby Ave. (x street N. Failing)  
Portland, Oregon

### Time

10 a.m. to 4:30 p.m. • Saturday, April 4  
Break for lunch 12:30 - 1:30 p.m.

### Seminar Features

Book sales from Heritage Quest & the GFO  
Raffle with great prizes  
Coffee, tea and snacks throughout the day  
Syllabus: free electronic copy included

### Lunch

Bring your own or order from GG's Deli. A  
lunch selection form will be sent with your  
confirmation. Sack lunch is \$10, and includes  
your choice of sandwich and side. Add \$1 for  
gluten-free bread.

## SUNDAY PROGRAM DETAILS

### Location

Genealogical Forum of Oregon Library  
2505 SE 11th Ave. #B-18  
Portland, Oregon

### Time

9:30 a.m. to noon • Sunday, April 5

**– Sunday Event Limited to 60 –**

### Payment and Refund Details

Register and pay online at [gfo.org/dna](http://gfo.org/dna).

**– OR –**

Complete registration form below and mail with  
your check to: **GFO Spring Seminar, 2505 SE  
11th Ave. #B-18, Portland, OR 97202-1061.**

For cancellations received after Mar. 29, 2020,  
refunds will be subject to a \$10 cancellation fee.  
Lunches must be ordered by noon on Apr. 1, 2020.

**Lunch fees are non-refundable if canceled after  
noon on Apr. 1, 2020.**

## REGISTRATION FORM – OR – *register online @ [gfo.org/dna](http://gfo.org/dna)*

You may sign up for Saturday, Sunday, or both sessions. One form per attendee, please.

Circle price selected, enter amounts on the right, and total at the bottom.

Name \_\_\_\_\_ Member No. \_\_\_\_\_

Email \_\_\_\_\_ Telephone No. \_\_\_\_\_

Payment Enclosed       Paid online at [PayPal.com](http://PayPal.com) using the email address [payments@gfo.org](mailto:payments@gfo.org).

SPRING SEMINAR WITH KAREN STANBARY Select one or both sessions	EARLY REGISTRATION By February 29, 2020		REGISTRATION After February 29, 2020		AMOUNT
	Member	Non-Member	Member	Non-Member	
	Price	Price	Price	Price	
<b>SATURDAY PROGRAM SOLVE DNA PUZZLES</b>	\$45	\$50	\$50	\$55	
Lunch from GG's Deli (order/cancel by 4/1)	\$10	\$10	\$10	\$10	
Add gluten-free bread	\$1	\$1	\$1	\$1	
Electronic copy of syllabus is free with your registration. Optional paper copies will be available for \$3 at the door.					
<b>SUNDAY PROGRAM ADVANCED DNA</b>	\$25	\$30	\$30	\$35	
Electronic copy of syllabus is free with your registration. Optional paper copies will be available for \$3 at the door.					
2505 SE 11th #B18, Portland, OR 97202 • <a href="http://gfo.org/dna">gfo.org/dna</a>			<b>TOTAL FOR ALL</b>		



The Forum Insider  
 Genealogical Forum of Oregon  
 2505 SE 11th Ave., Suite B-18  
 Portland, OR 97202-1061

ADDRESS SERVICE REQUESTED

Non-Profit Organization US POSTAGE PAID Portland Oregon Permit No. 745
---



January 2020

GFO Calendar

[gfo.org/calendar](http://gfo.org/calendar)

~~~~~ January ~~~~~

|            |                                  |                                 |
|------------|----------------------------------|---------------------------------|
| Wed 01/01  | <b>Library Closed</b>            |                                 |
| Sat 01/04  | 10 a.m.–12 p.m.                  | Virginia Group                  |
|            | 1–3 p.m.                         | German Group                    |
| Sun 01/05  | 9:30 a.m.–12 p.m.                | Manuscripts Work Party          |
| Mon 01/06  | <b>Free to Non-Members</b>       | <b>Open until 5 p.m.</b>        |
| Tues 01/07 | 10–11:30 a.m.                    | Italian Group                   |
| Wed 01/08  | <b>Library Open until 8 p.m.</b> |                                 |
| Thu 01/09  | 9 a.m.–5 p.m.                    | Beginners Boot Camp             |
| Sat 01/11  | 9:30–11:30 a.m.                  | Great Lakes Region Group        |
|            | 1–3 p.m.                         | Writers' Forum                  |
| Sun 01/12  | 9 a.m.–12 p.m.                   | Library Work Party              |
| Tues 01/14 | 6:10–8:10 p.m.                   | Board Meeting                   |
| Wed 01/15  | 10 a.m.–12 p.m.                  | Learn & Chat                    |
|            | <b>Library Open until 8 p.m.</b> |                                 |
| Sat 01/18  | 9:30–11:30 a.m.                  | Genealogy Problem Solvers       |
|            | 12–2 p.m.                        | African American Group          |
|            | 2–3 p.m.                         | GenTalk: DNA Crime Panel        |
| Sun 01/19  | 9 a.m.–12 p.m.                   | Library Work Party              |
|            | 1–3 p.m.                         | Family Tree Maker for Beginners |
|            | 3:30–5 p.m.                      | French Canada Group             |
| Wed 01/22  | 6–8 p.m.                         | Portland Mac Users Group        |
|            | <b>Library Open until 8 p.m.</b> |                                 |
| Sat 01/25  | 9 a.m.–12 p.m.                   | DNA Advanced Group              |
|            | 1–3 p.m.                         | British Group                   |
| Sun 01/26  | 9 a.m.–12 p.m.                   | Library Work Party              |
| Wed 01/29  | <b>Library Open until 8 p.m.</b> |                                 |

~~~~~ February ~~~~~

|            |                                  |                                |
|------------|----------------------------------|--------------------------------|
| Sat 02/01  | 10 a.m.–12 p.m.                  | Virginia Group                 |
|            | 1–3 p.m.                         | German Group                   |
| Sun 02/02  | 9:30 a.m.–12 p.m.                | Manuscripts Work Party         |
| Mon 02/03  | <b>Free to Non-Members</b>       | <b>Open until 5 p.m.</b>       |
| Tues 02/04 | 10–11:30 a.m.                    | Italian Group                  |
| Wed 02/05  | 10 a.m.–12 p.m.                  | Learn & Chat                   |
|            | 1–3 p.m.                         | DNA Q&A: Beyond the Basics     |
|            | <b>Library Open until 8 p.m.</b> |                                |
| Sat 02/08  | 9:30–11:30 a.m.                  | Great Lakes Region Group       |
|            | 1–3 p.m.                         | Writers' Forum                 |
| Sun 02/09  | 9 a.m.–12 p.m.                   | Library Work Party             |
| Tues 02/11 | 6:10–8:10 p.m.                   | Board Meeting                  |
| Wed 02/12  | 6–8 p.m.                         | Portland Mac Users Group       |
|            | <b>Library Open until 8 p.m.</b> |                                |
| Fri 02/14  | 11:30 a.m.–1:30 p.m.             | Mexican Ancestry Group         |
| Sat 02/15  | 9:30–11:30 a.m.                  | Genealogy Problem Solvers      |
|            | 12–2 p.m.                        | African American Group         |
|            | 2–3 p.m.                         | GenTalk: Intro to Excel        |
| Sun 02/16  | 9 a.m.–12 p.m.                   | Library Work party             |
|            | 1–3 p.m.                         | Family Tree Maker Users' Group |
|            | 3:30–5 p.m.                      | French Canada Group            |
| Wed 02/19  | 10 a.m.–12 p.m.                  | Learn & Chat                   |
|            | 1–3 p.m.                         | DNA Q&A: The Basics            |
|            | 6–8 p.m.                         | Irish Group                    |
|            | <b>Library Open until 8 p.m.</b> |                                |
| Sat 02/22  | 9 a.m.–12 p.m.                   | DNA Beginners                  |
| Sun 02/23  | 9 a.m.–12:30 p.m.                | Workshop: Spreadsheets         |
| Wed 02/26  | 6–8 p.m.                         | Portland Mac Users Group       |
|            | <b>Library Open until 8 p.m.</b> |                                |