

SPRING SEMINAR



We welcome ...

Thomas W. Jones
Ph.D, CG, CGL, FASG

SATURDAY
2 APRIL 2011
9 AM - 4 PM
MILWAUKIE ELKS LODGE



Host Organization—Genealogical Forum of Oregon, Inc.
gfo.org



Tom Jones' Topics

- ~ Five Ways to Prove Who Your Ancestor Was
- ~ How to Avoid Being Duped by the Internet
- ~ Solving the Mystery of the Disappearing Ancestor
- ~ Finding “Unfindable” Ancestors

SEMINAR FEATURES:

Nationally known speaker

Book Vender

Genealogical Treasures Drawing

GFO Surplus Book Sale

JONES 2011 SPRING SEMINAR SIGN-UP FORM 2 APRIL 2011

Name _____ Member # _____

Email for confirmation _____

Address City, State & Zip _____

Telephone _____

MEMBERS: { } \$40 received by **Mar. 28th**, { } \$45 received after **Mar. 28th (no lunch)**

NON-MEMBERS: { } \$45 received by **Mar. 28th**, { } \$50 recvd after **Mar. 28th (no lunch)**

LUNCH: { } \$11 must be received by **Mar. 28th** TOTAL ENCLOSED: _____

LUNCH

Buffet lunch in the Elks Dining Room with payment for lunch. The buffet for \$11 includes pot roast, baby red potatoes and three salads. Coffee, hot tea and cold drinks included

No lunch available after

Checks made payable to Genealogical Forum of Oregon or —GFO||, PO Box 42567, Portland, OR 97242-0567

**** FEE AT THE DOOR \$50 MEMBER, \$55 NON-MEMBER**

SEMINAR REGISTRATION : 8 AM—9 AM ON SATURDAY 2 April 2011

First class starts at 9:15 am.... With a morning break, a one hour lunch and an afternoon break. Program ends about 3:30 pm. Snacks and drinks at morning and afternoon breaks included with admission.

Refund policy: For cancellations received after 28 March 2011, refunds will be made in the amount of the registration fee less a \$10.00 cancellation fee. Lunch fees are non-refundable if cancelled after 28 March 2011

TOPICS FOR THE SEMINAR

Thomas W. Jones, Ph.D, CG, CGL, FASG, FUGA, FNGS has edited the *National Genealogical Society Quarterly* since 2002. He is a former trustee and a past president of the Board for Certification of Genealogists, past board member of the Association of Professional Genealogists and the recipient of its 2004 Grahame T. Smallwood, Jr. Award of Merit. Retired from a thirty year career in higher education and professor emeritus at Gallaudet University in Washington D.C., Tom works full time as a genealogical researcher, writer, editor and educator. His research has encompassed records of every state east of the Mississippi as well as Iowa, Missouri, Texas, England, France, Germany, Italy, Ireland and Wales. He specializes, however, in Georgia and Virginia and is most interested in solving —brick wall genealogical problems.

~Five Ways to Prove Who Your Ancestor Was Case studies will illustrate five ways—some reliable and other not—that genealogists prove an ancestor’s identity: using information provided by others; using a single source; following a chain of evidence correlating evidence from multiple sources; weighing conflicting evidence. Attendees will learn how to use the Genealogical Proof Standard (GPS) to identify their ancestors accurately.

~How to Avoid Being Duped by the Internet The internet brings increasingly bountiful amounts of information to genealogists’ desktops—some valid, some erroneous and much of unknown accuracy. Attendees will learn practical strategies for discriminating between correct and misleading information. They will also learn how online genealogical information—even if its accuracy is unknown—can lead to valid conclusions about ancestors.

~Solving the Mystery of the Disappearing Ancestor Genealogists may be frustrated by not finding ancestors in the records and places where they logically expect them to be. This presentation will explain seven reasons why such ancestors seem to have disappear, provide examples from actual case studies and suggest strategies to help find your elusive ancestors.

~Finding “Unfindable” Ancestors The failure of common research practices to identify ancestors does not mean they are unfindable. This session will describe and demonstrate nine approaches to locating difficult—to-trace ancestors.

**Site of Seminar
Milwaukie Elks Lodge**

13121 SE McLoughlin Blvd. Milwaukie, Oregon

Situated on the west side of McLoughlin Blvd., Oregon Hwy 99E, 1/2 mile south of the town of Milwaukie. Located between SE Park Avenue (traffic light to the north) and the Bomber (restaurant to the south). Look for Milwaukie Elks Lodge sign

Mailing Address:

**2011 Spring Seminar
Genealogical Forum of Oregon
PO Box 42567
Portland OR 97242-0567**

Phone 503-963-1932 Website: www.gfo.org

LIBRARY HOURS: M, T, W, TH 9:30 am—5 pm
SAT 9:30 am—3 pm, SUN Noon—5 pm

MAIL-IN BALLOT

(see reverse side)

Genealogical Forum of Oregon Spring 2011

NOTE: Due to the impending relocation of our library and society headquarters this summer, upcoming contracts to be signed , etc., and abiding within the constraints of our bylaws, the current slate of officers—with additions— have agreed to serve an extension of their 2-year terms, some for one or two more years. It was also the requirements of the bylaws to stagger the terms so there could be some continuity when terms were up. However, that wasn't possible because in year 2009, all officers and Directors-at Large were new to the board positions.

SEE REVERSE FOR BIOS

PRESIDENT (1 year extension)

Lyleth Winther

Write In Candidate

VICE PRESIDENT (2 year extension)

Janet Irwin

Write In Candidate

SECRETARY (1 year extension)

Gwen Newborg

Write In Candidate

TREASURER (2 year extension)

Jeanette Hopkins

Write In Candidate

DIRECTOR AT LARGE (VOTE TWO)

Cathy Lauer (1 year extension)

Laurel Smith (2 year term)

Write In Candidate

MAIL-IN INSTRUCTIONS FOR BALLOT

1. Fold this side in thirds, seal with bit of Scotch tape 2. Add first class postage: No Staples

THE CANDIDATES:

LYLETH WINTHER.....Current president, ongoing Research Assistant on the main desk for almost 20 years, a member for 30 plus years. She enjoys helping folks use the library and computer software, and the camaraderie with the other volunteers. Lyleth has served as board secretary, as well as on several of the committees over the years. For over 4 years, she served as editor of both the Forum Insider newsletter as well as The Bulletin quarterly magazine. She retired from John Deere Company in Gresham and belongs to the Deere Retirees group in this area.

JANET IRWIN.....Janet is a recent newcomer to the Forum, having joined about three years ago. She has served the past two years as Vice President on our board, and took on the task of finding more ways to account for and recognize our many volunteers. Her present occupation is as a librarian with the Multnomah County Library...some 40 years worth. At GFO, she gave presentations in the past at our Monthly Program, and did some workshops in different library branches.

GWEN NEWBORG.....Gwen has been active in GFO for several years, and is the current board secretary, as well as serving on the ever busy Education Committee. She also is active with the Scandinavian Genealogy Society as well as the Sons of Norway, including teaching some classes. She is active in the British Group, doing presentations from time to time. Gwen retired from Portland State University after 30 years where she was in charge of the Federal Regional Depository Program, and also oversaw the state and local documents collection as well as business reference material.

JEANETTE HOPKINS.....Jeanette joined GFO in 1991, and has served as board treasurer as well as volunteering on different committees, including the Education Committee. She has co-chaired recent GFO seminars, as well as working some Sundays a month on the GFO desk as a Research Assistant. Jeanette still works part time, doing accounting for a group of lawyers.

CATHY LAUER.....Cathy has been a member some 32 years, and served as a Research Assistant for most of that time. Currently she is the Schedule Coordinator for the many volunteers on the Research Assistant List, making sure that the library is open for business as usual. She has served on committees, helped with the extraction projects, and did the proofing of lineages for the First Families of Multnomah County project. She has served the past two years as Director at Large, one of two, and is the liaison between the members and the board should an issue arise. Cathy retired from Fred Meyers a couple of years ago.

LAUREL SMITH.....Laurel has been a member of GFO for about three years, and has recently started volunteering as a Research Assistant on the main desk. She comes to us with a background of volunteering in several other organizations over the years, and retired from positions such as an office manager and a customer service manager. She is currently a board member of the Skyliners Group (for folks over 6 feet tall)

FOLD

**Genealogical Forum of Oregon Inc.
PO Box 42567
Portland OR 97242-0567**

Postage Stamp _____

**BALLOT
Genealogical Forum of Oregon Inc.
PO Box 42567
Portland OR 97242-0567**

The Forum Insider

VOLUME 22

ISSUE 6

April 1, 2011

NEWSLETTER
of
**THE GENEALOGICAL
FORUM OF OREGON**
www.gfo.org

1505 SE Gideon St.
Near the Intersection of SE
Powell and SE 12th Ave
(Milwaukie Ave.)
503-963-1932

Mailing Address:
P.O. Box 42567
Portland, OR 97242-0567

**Monthly Membership
Meetings:**

Second Saturday of each
month at 2:00 p.m. with a
speaker.

Library Hours

Mon-Tues-Wed-Thurs:
9:30 a.m. to 5:00 p.m.
Saturdays: 9:30a.m.-3 p.m.
Sun: 12:00 p.m.-5 p.m.
Closed Fridays

**SUBMISSIONS to the
INSIDER**

Feedback, corrections, news,
short success stories,
announcements to
Janis Bailey, editor, at
jbailey172@comcast.net
Or leave messages at GFO
desk 503-963-1932
Submissions by the 7th of the
month for inclusion in the
following month's issue

Opinions expressed in this
Newsletter are not necessarily
those of the Genealogical Forum
of Oregon.



WHAT'S INSIDE THIS ISSUE

SPRING SEMINAR FLYER & REGISTRATION.....	1-2
GFO ELECTION BALLOT	3&4
TABLE OF CONTENTS	5
PRESIDENT'S MESSAGE	6
APRIL'S MONTHLY PROGRAM	6
MAY'S ALL-NIGHTER.....	6
APRIL'S HERITAGE SCRAPBOOKING MEETING	7
DNA INTEREST GROUP FOR APRIL	7
ANNUAL APPEAL 2010-2011 LIST OF DONORS	8
SUMMARY OF INCOME & EXPENSES.....	8
OTHER WAYS TO HELP SUPPORT THE G.F.O.....	8
MOVING AHEAD	9
REQUEST FOR PHOTOGRAPHS.....	10
ABOUT THE FORD BUILDING	10
LEASE-SIGNING SET FOR EARLY APRIL	10
DID YOU KNOW?	10
UPCOMING EVENTS IN THE REGION	11
CALENDAR OF UPCOMING EVENTS	12

**THE GFO MEMBERSHIP FEES OF \$40 A YEAR
ARE 100% TAX DEDUCTIBLE
IN KEEPING WITH OUR 501 c (3) NON-PROFIT EDUCATION
STATUS**

President's Message

The GFO Spring Seminar should provide many clues for your research. Thomas Jones is our guest speaker and is well known at national conferences. We hope to see you there.

As for our Relocation process, it looks like the committee and board have visited several locations, and one a few blocks away is being fine-tuned for a lease agreement. We think most of the top requirements from the returned surveys have been met. Our Relocation Committee has done a wonderful job representing our interests and working with the TRIMET representatives.

Did you watch the recent episodes of "Who Do You Think you Are?" on NBC-TV? During three of the weekly episodes, GFO paid for some 15 second spots. Who knows what kind of response we might receive from the ads. Each of the featured episodes show some of the research techniques we all use in our own research. The interesting stories of certain celebrities has been well presented.

As warmer weather gets folks out and moving again, we hope you have great finds in some of the regional libraries and cemeteries.

Lyleth Winther 503.658.8018 or LylaW1@frontier.com

SHARING YOUR FAMILY HISTORY GFO April Monthly Meeting April 9, 2011

It's so easy to just keep researching, never putting your genealogy in some form that you can share with your family and others. Come to the GFO monthly program to hear about ways of getting all of your hard won genealogical findings into a form that others will enjoy. The meeting is April 9th at 2 p.m.

Peggy Baldwin, facilitator of the GFO Writers' Forum will talk about how to write about your family. Bonnie LaDoe, facilitator of the GFO Heritage Scrapbooking group, will talk about more visual ways of presenting your family story. We'll present these methods as well as others, to help you get started sharing your family history. We will also be presenting awards for the 2011 GFO Writing Contest. Come and help us honor the people who have already begun to get those family stories down on paper.



MARK YOUR CALENDARS FOR THE NEXT GFO ALL-NIGHTER

Saturday, May 21, 2011
6 p.m. to 6 a.m. Cost \$15
COME JOIN THE FUN!

Snacks provided
Pizza at Midnight:
Questions?

Email Julie at rathernut@cs.com
or check with GFO
503-963-1932

MANY THANKS TO THE RELOCATION COMMITTEE

For the many hours of searching for the ideal location for G.F.O.'s new home, we thank committee members: Gerry Lenzen, Fred Hasle, Jeanette Hopkins, Jim Morrow, Nedra Dickman Brill, and Don Holznagel, Chairman

The Forum Insider (ISSN 1051-5666) is the newsletter of the Genealogical Forum of Oregon Inc., PO Box 42567, Portland OR 97242-0567. The Forum is a membership organization devoted to genealogical research, preservation, and education. The GFO publications promote the field of genealogy for the professional and the hobbyist. Dues are \$40 per year for individual memberships and \$55 for joint memberships. Membership includes subscriptions to *The Bulletin* (March, June, September, and December) and *The Forum Insider* (January, February, April, May, July, August, October & November). Material from *The Forum Insider* may be reproduced provided credit is given to the publication, the author of the article, and the Genealogical Forum of Oregon. *The Forum Insider* staff includes Janis Bailey, Editor; Loretta Welsh, Publisher; Jim Morrow and Bruce Conrad Assistants to Loretta; Shirley Durkheimer, Assembling; Bob & Marianne Schug, Mailing Labels; Ray Ashmun, Post Office delivery. Many thanks to everyone including our proofreader, Susan LeBlanc.

GFO Interest Group News**HERITAGE SCRAPBOOKING**

Next Meeting, Sunday, April 3rd 1:00-4:30 p.m.

Heritage Scrapbooking continues to be available at GFO on the first Sunday of the month from 1p.m. to 4:30 p.m. Please feel free to join us anytime within those hours.

Bring your heritage photos, your album and your papers and get started on that album you've always wanted to do. We have some cutting tools and punches available for your use, as well as some how-to books to peruse. You may wish to include genealogy charts for each family in your album, and/or include family stories, recipes, etc. Whatever you decide, you can be sure your family will thank you for it and you can pass your old photos on knowing they will be treasured for generations to come.

If you prefer to do digital scrapbooking, bring your laptop and join in the fun. There are many digital scrapbooking programs available now and perhaps you've found one you can recommend. I'm enjoying my new Creative Memories program and hope to have some pages printed to show off soon.

So whether you're a newbie or an old hand at scrapbooking, please gather up those old photos (or get them scanned) and join us at our next meeting on April 3rd. Everyone is welcome, and as always, it's free of charge.

Regards,

Bonnie LaDoe

Completed Scrapbook by
Judi Scott

**DNA INTEREST GROUP**

The next session will be the second Tuesday of April, April 12th, from 1:30 pm to 3:00 pm.

We'll cover information at the *Who Do You Think You Are Conference*, in part, and the Basic's of DNA including the three types of tests:

Y-chromosome, mitochondrial DNA and autosomal DNA (Family Finder Test).

Emily

A COORDINATOR OF VOLUNTEERS NEEDED

A person is still needed to coordinate the need for volunteers with those who have voiced willingness to offer their time. The coordinator needs to be the contact person for each potential volunteer and direct them to the appropriate department. Some call-backs could be done from home.

In the meantime, call our president, Lyleth Winther, who is filling this position temporarily. 503-658-8018 or LylaW1@frontier.com

MEMBERS'**Favorite Websites:**

www.gfo.org

www.archives.gov/aad/

www.usgenweb.com

www.rootsweb.com

www.cyndislist.com

www.familysearch.org

www.ancestry.com

www.nara.gov

www.sos.mo.gov/archives/

www.multcolib.org

www.ohs.org

www.ccgswa.org

(Clark Co Gen Soc)

www.sos.state.il.us/departments/archives/archives.html

www.genealogy.az.gov/index.htm

www.DAR.org

www.theshipslist.com

<http://abish.byui.edu/specialCollections/westernstates/search.cfm>

(Western States Marriages to 1928)

www.kshs.org (Kansas)

www.ellisland.org

Heritagequest online (through multcolib.org)

www.findagrave.com

www.footnote.com \$ (free for 1st week)

www.genuki.org.uk

www.genealogy.com \$

www.GenealogyToday.com

www.interment.net (cemetery inscriptions)

www.ObitCentral.com

www.progenealogists.com

www.genqueries.com

www.greenerpasture.com

free website gives documentation for vital records, family trees and censuses. Includes digitalized images. It is limited in scope, but I've used it for French Canadian genealogy and found it excellent. American resources are to be found also.

2010-2011 ANNUAL APPEALList of Donors

Thank you to the following Annual Appeal donors who made donations during January and February 2011. The total of all donations is now \$9,339.00. There's still time for you to make your donation to assist us in making our upcoming move successful. Any amount will assist us in reaching our \$15,000.00 goal to be used for the move.

Sustaining Level \$100-\$249

Judy Fox
Peg Kenaga
Judy Lancaster

Patron Level up to \$49

Barbara Memovich

Anonymous Donors

5 Anonymous Donors

2010-2011 Annual Appeal for the Genealogical Forum of Oregon Inc.

PO Box 42567 Portland, Or 97242-0567

We're Celebrating 65 years! 1946 - 2011

Yes, I want be part of the future of the GFO! Here's my tax deductible donation of \$ _____

___ Heritage Level \$1,000 and up ___ Ancestral Level \$250 to \$499 ___ Pedigree Level \$500 to \$999

___ Sustaining Level \$100 to \$249 ___ Supporting Level \$50 to \$99 ___ Patron Level up to \$49

Name: _____ Member No. _____

Address: _____

City: _____ State: _____ Zip+4: _____

Please check this box if you do not want your name published.

**A BRIEF SUMMARY OF INCOME AND EXPENSES
FROM THE TREASURER**

Income for Jan 2011 was \$7,011.33, expenses \$4,569.19. The surplus is due to annual appeal donations. Amazon commission from Jul 2010 - Jan 2011 is only \$101.82. **Please remember to access their site through our website so we earn our referral fee on your purchase!** For the fiscal year, membership dues are \$14,786.00 or 35% of the overall income. Research income totals \$1,353.19 which is generated from our website databases. Marriage CD sales for all 4 volumes totals \$464. Rent expense is \$23,035.95 or 61% of our expenses for the year to date. Our annual non-profit tax returns have been filed for fiscal year 2009-2010.

Jeanette Hopkins, Treasurer

OTHER WAYS TO HELP SUPPORT GFO

Shop online for merchandise and subscriptions that give GFO a commission. Go to the GFO Web Site, where you will see "Support Us" on the right-hand side. Click on **Amazon, Heritage Books** or **Family Tree DNA** (to order a test kit for which you will receive a discount.)

Subscribe to **World Vital Record** or **Footnote.com**. These must be ordered through the Web Site for GFO to earn a commission.

If when making purchases at **Office Depot**, you give our phone number (503-963-1932), GFO will earn a 5% commission.

MOVING AHEAD
IT'S GETTING CLOSER.....

This month's relocation report will recap the search for a new home over the last few months, and relate as much as we know about the process from here on. It could be that by the time you read this, much more detail can be related, and we will do so in the Insider Extra.

From Dec. 1 to Feb. 15, the Relocation committee compiled a list of 33 candidate properties identified primarily by our realtor, but also reported by GFO members. Between mid-December and early February, a drive-by of each property was conducted by 1 to 4 committee members. The committee reviewed all properties by comparing committee comments and printed specifications with the list of minimum characteristics previously published to the membership. Eight properties were visited by committee members, five of those were visited by board members, and two finalists were identified. The Board confirmed its preferred selection on Feb. 17th. Negotiations were conducted and agreement was reached on Feb. 24. The new home is the Ford Building at the corner of SE Division St and Eleventh Ave.

The Ford building is an historic property, designed by renowned Portland architect A. E. Doyle. In the early part of the 20th century, it was a Ford auto plant. In its new and completely renovated form, it is a multi-use building of offices, artist studios and a restaurant. **Thanks are due to the members of the Relocation Committee: Don Holtznagel, Chairman, Gerry Lenzen, Fred Hasle, Jeanette Hopkins, Jim Morrow, Nedra Dickman Brill.**



THE FORD BUILDING
2505 SE 11th Ave.
Portland

The committee has conducted increasingly frequent direct contact with TriMet representatives and contractors to plan the sequence of activities needed to occupy the space. **At this time it appears the actual move to the new facility will take place in late July or August. Looking ahead, the Board has identified the possibility of closure of library activities in that period for 2 weeks of the actual move, possibly a week before the move, and possibly some time after the move to prepare the space, train volunteers, and generally organize functions. A calendar for that period will be publicized as soon as possible.**

There are a number of improvements to the space which are needed in order to function properly for GFO purposes. These include removing several partitions, installation of doors, and modifications to electrical and HVAC systems.

Of course there are a number of opportunities for members to participate in the moving process. Many volunteers will be needed as we grow closer to moving weeks in July and August. In particular, we need a small crew on the actual moving days at the Gideon facility and one at the new site to answer questions, run errands and do unexpected tasks. Later we will need volunteers at the new space to answer questions and give tours. Training will be provided and a grand opening will be held after we settle in, which will require more volunteers.

If you are excited about our move and want to help, consider flexible summer vacation plans for July and August. We will have much more information in the May *Insider*.

Don Holtznagel

dholtznag@pacifier.com

503-467-7515

REQUEST FOR PHOTOGRAPHS

We are considering a special Grand Opening edition of the *Insider*, which might include, photos of the GFO's past locations, if any such photos exist. Please look around in your memorabilia and email me if you find anything . jbailey172@comcast.net

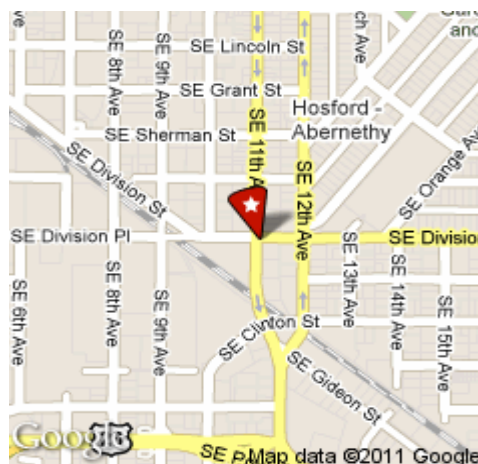
ABOUT THE FORD BUILDING

As we contemplate GFO's move to the Ford Building at 2502 S.E. 11th Avenue and Division, we can take time to consider how fitting it will be to include the GFO and its mission of research into the history of our ancestors within this historic building built in 1914 and its architect, A.E. Doyle (1877-1928). Among his many achievements are the Multnomah County Central Library, PGE Park, the Benson Hotel, the Myer and Frank Building and much of the Reed College campus's Elliot Building.

A book published in 2008 by Philip Niles, *Beauty of the City: A. E. Doyle, Portland's Architect* is available at Amazon.com.

Named the Ford Building, it was a Ford assembly plant, the only one in Oregon. Model T's and Ford Falcons were built here.*

*: <http://www.typepad.com/services/trackback/6a00d8341c86d053ef010536c17201970c>



LEASE SIGNING FOR GFO'S NEW HOME SET FOR EARLY APRIL

"However, the date is uncertain as of this writing, so it would be best for members to wait before visiting the interior of the lease space. After signing, there will be extensive modifications to the space to meet GFO needs and satisfy city codes for our type of operation. Also, existing businesses in the building will be carrying on their work and we want to be good neighbors. When the time is right, the membership will be notified, and special walk-throughs will be held.

The coffee shop on the main floor will be serving customers, so drop in for an espresso!

DID YOU KNOW ?

From the New England Genealogical Historical Society

USScouts.org is a group of volunteers who put together resources for youth and adults involved in the Boy Scouts of America program. They provide a great deal of information based on their experience participating in the program. Among the resources is information on the more than 100 merit badges that scouts can earn. Among the many badges is one for genealogy. USScouts lists the 9 requirements of earning the merit badge. I was pleased to see that one of the requirements was to interview a relative or family acquaintance about the family. They are also required to keep a journal for six weeks, writing in it at least once a week.

Scouts are required to name three types of genealogical resources and how then help. They must obtain at least one document and explain how they would evaluate the information included in it. They must also explain how photography (including microfilming) has influenced genealogy.

USScouts provides sample pedigree charts and family group sheets in both Microsoft Word and Adobe PDF format. I found it fascinating to read all of the requirements. It does make me wonder how qualified the scout leaders are who are judging the merit badge requirements. You can see the full requirements (and guess how you would do) at USScouts.org.

by Michael J. LeClerc

The Weekly Genealogist
Vol. 14, No. 10

SOME UPCOMING EVENTS IN OUR REGION

The Tacoma-Pierce County Genealogical Society will be presenting our Spring Seminar on May 7, 2011. Details are on our website at <http://www.tpcgs.org/seminar.html>

TPCGS Spring Seminar 2011

May 7, 2011

Speaker: **Laura G. Prescott**, who comes to us highly recommended by our own **Cyndi Howells**, who will be the emcee.

Topics:

Turning Fiction Into Fact
Treasures Within the Ivory Tower: Finding Family in Academic Archives
Timelines: Placing Your Heritage in Historical Perspective
The Rest of the Story: Using Manuscripts to create a Family History

Location: La Quinta Inns and Suites, 1425 East 27th Street, Tacoma, Washington
A limited number of rooms will be available at a special rate for seminar attendees.

Registration: Before April 20, 2011: Members, \$35; Non-Members, \$40 (become a member now and save!); Students, \$20 (Under 25 with Student ID). Lunch (sandwich and salad bar), \$15.

After April 20th, add \$5 late fee.

The BGS Spring Seminar is coming up!

The Bend Genealogical Society is excited to announce our 2011 Spring Seminar, featuring nationally acclaimed professional genealogist Hank Z. Jones, Jr. Hank is a Fellow of the American Society of Genealogists, a member of the Association of Professional Genealogists, an authority on the Palatines, and the author of award-winning books. His experience as a singer and entertainer in television and films enhances his genealogical presentations.

The Spring Seminar events will include a social evening with Hank on Friday, May 13th, and an all-day seminar on Saturday, May 14th. **Registration is required**, and the fee includes all events, meals and syllabus.

NOTE: Early registration ends March 31st. Registration fees increase after that. **All questions about the Seminar should be directed via e-mail to: bgs@bendbroadband.com, or call BGS at (541) 317-9553.**

THE WESTSIDE FHC FREE SEMINAR, "CLIMBING YOUR FAMILY TREE" MAY 21, 2011, BEAVERTON, OREGON

The Westside FHCs are excited to announce "*Climbing Your Family Tree*", a free Genealogy and Family History Conference to be held on Saturday, May 21, 2011 in Beaverton, Oregon.

Over 30 classes will be available for all skill levels from beginning to advance. Class schedule, class descriptions, presenter's bios and additional information can all be found on the conference website, www.cyft.org. Those desiring to attend may register directly through this website.

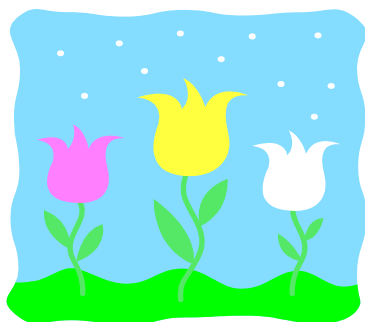
We have a special guest speaker, Tim Cross, Project Manager, Family Search, Salt Lake City, UT, along with many local presenters. Tim will have two classes on Family Search plus a third open Questions & Answers period about Family Search, which he has especially invited all FH Consultants to attend.

The Forum Insider

Genealogical Forum of Oregon Inc.
1505 SE Gideon Street
PO Box 42567
Portland, OR 97242-0567

Address Service Requested

Non-Profit
 Organization
 US POSTAGE
 PAID
 Portland Oregon
 Permit No. 745



Don't Forget the *Insider Extra Blog*
 available using the link on
www.gfo.org

CALENDAR OF EVENTS

APRIL 2011

- 2nd Spring Seminar:
 LIBRARY CLOSED
 At Milwaukie Elks Lodge**
**3rd Sunday: 1:00 p.m.-4:30
 Heritage Scrapbooking**
4th Monday: Library Free
**9th Saturday: 9:30 a.m.
 Illinois Group
 11:45 a.m. Writers' Forum
 2:00 p.m. Monthly Program
 Peggy Baldwin- "Writing
 Your Stories"**
**12th Tuesday: 1:30 to
 3:00p.m. DNA Group
 6:00 p.m
 Board Meeting**
**23rd Saturday: 10:00 a.m.
 "Introduction to
 Genealogy"**
**24th EASTER:
 LIBRARY CLOSED**

MAY, 2011

- 1st Sunday: 1:00 p.m.
 Heritage Scrapbooking**
2nd Monday: Library Free
**10th Tuesday: 6:00 p.m.
 Board Meeting**
**14th Saturday: 9:30 a.m.
 Illinois Group
 11:45 Writers' Forum
 2:00 p.m. Monthly Meeting
 Connie Lenzen: "Roots
 Television: A Painless Way To
 Learn"**
**21st Saturday: 9:30 a.m. TMG
 1:00 p.m. Irish Group
 6:00 p.m. to 6:00 a.m.
 All-Nighter
 1:00 p.m. British Group**
**30th MEMORIAL DAY,
 Library CLOSED**

JUNE, 2011

- 5th Sunday: 1:p.m.
 Heritage Scrapbooking**
6th Monday: Library Free
**11th Saturday: 9:30 a.m.
 Illinois Group
 2:00 p.m. Monthly Program
 and Honoring Volunteers
 Speaker Col. Warren W. Aney
 "Oregon Military"**
**14th Tuesday: 6:00 p.m.
 Board Meeting**